

FEATURES AND SPECIFICATIONS

Features and Benefits

- Sizes 2 to 15 circuits
- Housing lance provides extra terminal retention
- Friction lock provides secure mating

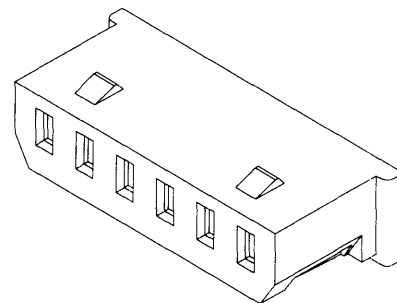
Physical

Housing: PBTP, UL 94V-0
 Operating Temperature: -20 to +85°C



2.00mm (.079") Pitch Wire-to-Board Housing

51004

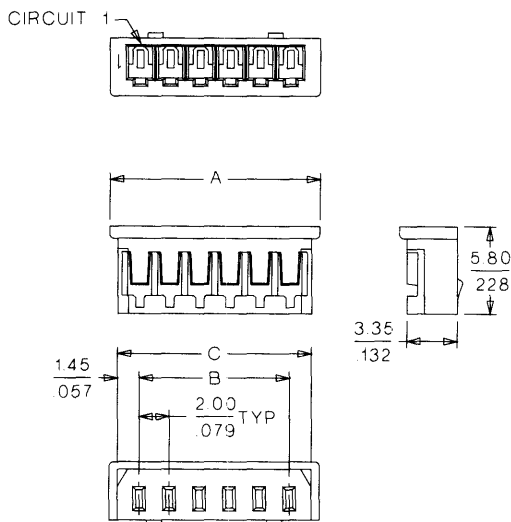


2.00 to 2.50mm (.079 to .098") Pitch

Reference Information

Packaging: Bag
 UL File No.: E29179
 CSA File No.: LR19980
 Mates With: 53014, 53015 and 53025
 Use With: 50011
 Designed In: Millimeters

CATALOG DRAWING (FOR REFERENCE ONLY)



ORDERING INFORMATION AND DIMENSIONS

Circuits	Order No.	Dimension		
		A	B	C
2	51004-0200	6.00 (.236)	2.00 (.079)	4.90 (.193)
3	51004-0300	8.00 (.315)	4.00 (.157)	6.90 (.272)
4	51004-0400	10.00 (.394)	6.00 (.236)	8.90 (.350)
5	51004-0500	12.00 (.472)	8.00 (.314)	10.90 (.429)
6	51004-0600	14.00 (.551)	10.00 (.394)	12.90 (.508)
7	51004-0700	16.00 (.630)	12.00 (.472)	14.90 (.587)
8	51004-0800	18.00 (.709)	14.00 (.551)	16.90 (.665)
9	51004-0900	20.00 (.787)	16.00 (.630)	18.90 (.744)
10	51004-1000	22.00 (.866)	18.00 (.709)	20.90 (.823)
11	51004-1100	24.00 (.945)	20.00 (.787)	22.90 (.902)
12	51004-1200	26.00 (1.024)	22.00 (.866)	24.90 (.980)
13	51004-1300	28.00 (1.102)	24.00 (.945)	26.90 (1.059)
14	51004-1400	30.00 (1.181)	26.00 (1.024)	28.90 (1.138)
15	51004-1500	32.00 (1.260)	28.00 (1.102)	30.90 (1.217)